

# PARTNERING FOR GROWTH<sup>®</sup>



## Business issue? Time for a fresh perspective.

Your business doesn't stand still – it evolves. When you're ready for growth, you must learn to administer an effective, stable commercial enterprise to deal with day-to-day tasks and business issues. We'll listen, connect you to the right specialists and work alongside you to find the answer.



## What can we do for you?

### I need to optimize my Operations

How can I best manage cyber, financial, technology and business risks? My data and systems are not providing valuable insights.

### I want to optimize my profitability

My overheads are too high. I need to reduce costs, and improve sales and margins. I need the right people and strategy to grow profits.

### I need to attract and retain talent

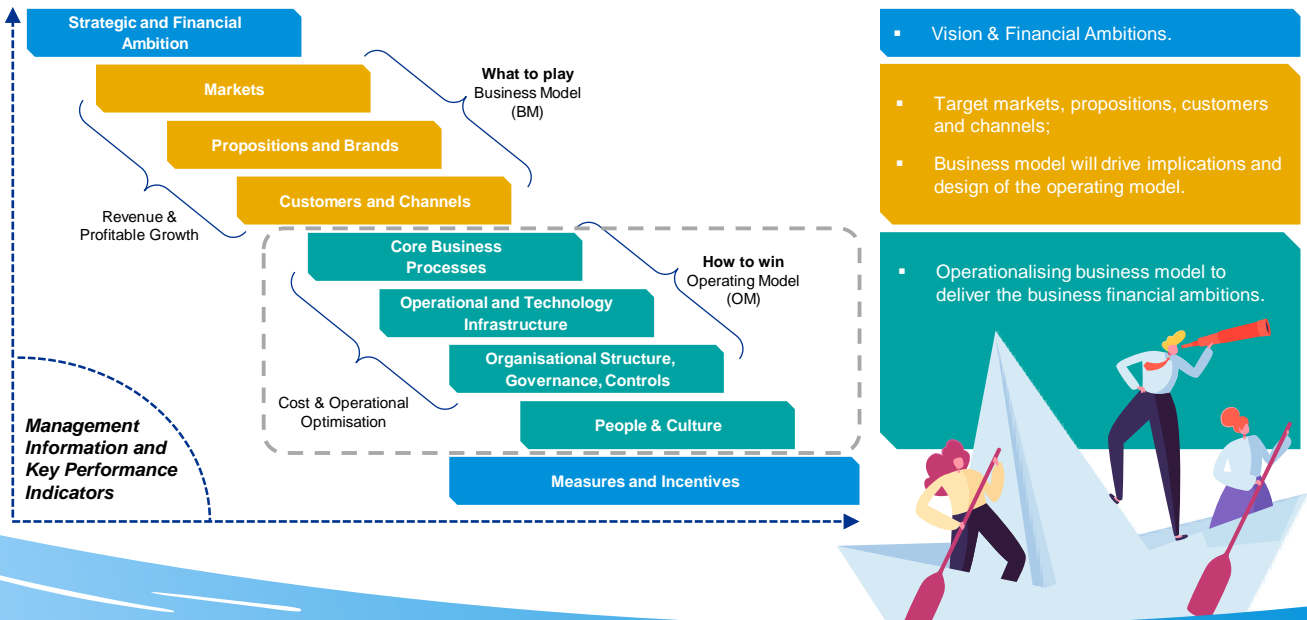
I need to keep my top talent engaged. I want to expand our middle management. I want an outside perspective on building a winning team.

## Your Journey. Our Support.

### PARTNERING FOR GROWTH<sup>®</sup>: '09 Levels of Value' Model

*"Our relationship with KPMG has helped support our growth. They understand what we want to achieve, without losing what makes us unique."* - **Group Finance Director, F&B business**

*"The expertise KPMG offer is crucial. They provide an outside perspective, and make sure we're always moving forward"* - **Managing Director, Manufacturing Business**



# What you will get

## Review and Design

- Understand strategies, business model and corporate plans, management philosophies and organisational culture;
- Review organizational structure and management methodology including human resource and compensation, structure, core business control, processes, reporting mechanism and application of information technology;
- Analyze organizational and managerial weaknesses, with recommendations to BOD for improvement.

## Support the holistic implementation

- The deployment are on-the-field actions and workshops with managers and executive personnel to ensure efficient knowledge transfer, feasible transformation outcome and appropriate prioritized roadmap.
- **Review incentive schemes** by positions to fit to the Company's compensation philosophies;
- Document the comprehensive **compensation policy**;
- **Review core business processes** including (but not limited to) sales, procurement, inventory management and asset management;
- **Set up Control Checklists** for each core business process to support supervision and continuous improvement;
- **Complete Financial Management Reports** (including 12 key financial indicators) with bespoke functions.

## Value-added services for management

- Update and transfer knowledge to the board and key management through workshops and seminars during the project;
- Support monthly Q&A sessions with KPMG Partners/ Directors (2 hours/month at max).
- Become a lifetime member of the exclusive KPMG NEXT Club

# We can help. Let's talk...



**Lam Thi Ngoc Hao**

Partner  
Business Transformation Services  
Tel: +84 28 3821 9266 (ext. 8375)  
Email: hnlam@kpmg.com.vn



© 2021 KPMG Limited, KPMG Tax and Advisory Limited, KPMG Legal Limited, all Vietnamese one member limited liability companies and member firms of the KPMG global organization of independent member firms affiliated with KPMG International Limited, a private English company limited by guarantee. All rights reserved.

The information contained herein is of a general nature and is not intended to address the circumstances of any particular individual or entity. Although we endeavour to provide accurate and timely information, there can be no guarantee that such information is accurate as of the date it is received or that it will continue to be accurate in the future. No one should act on such information without appropriate professional advice after a thorough examination of the particular situation.

The KPMG name and logo are trademarks used under license by the independent member firms of the KPMG global organization.